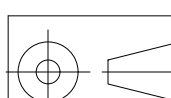



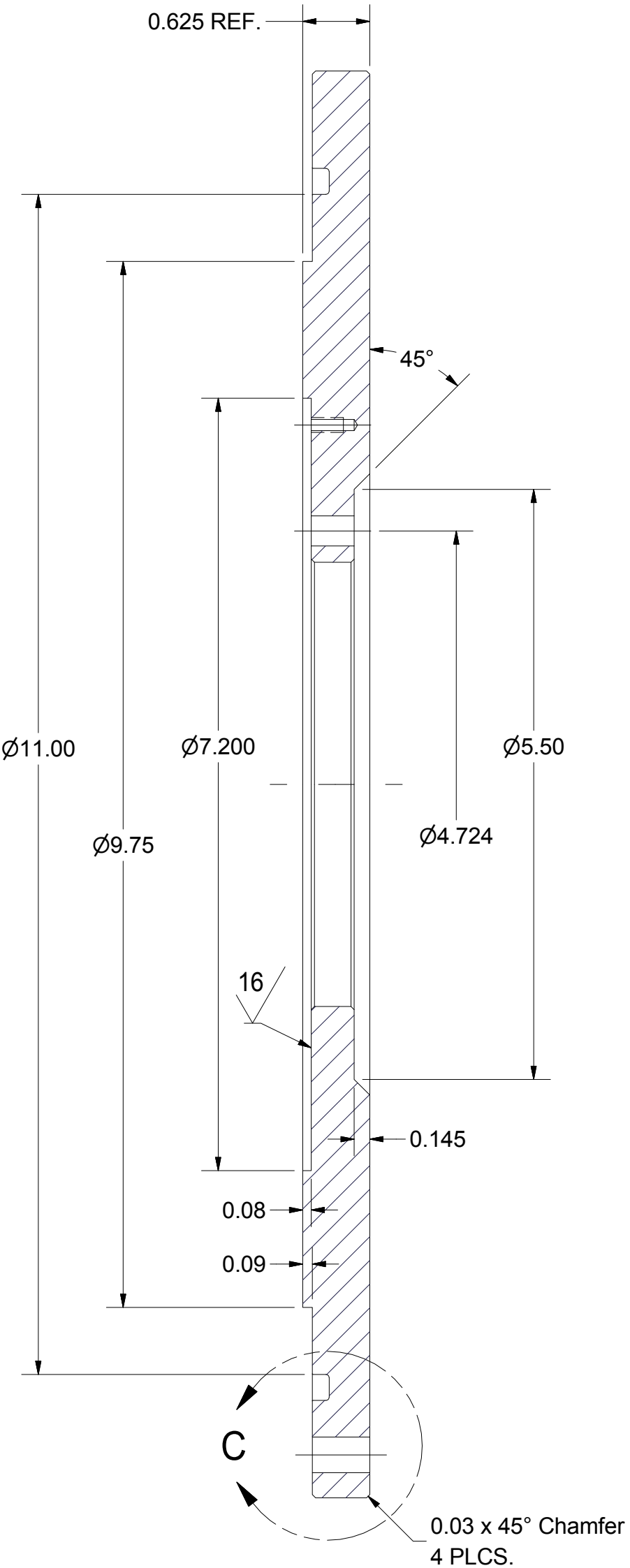
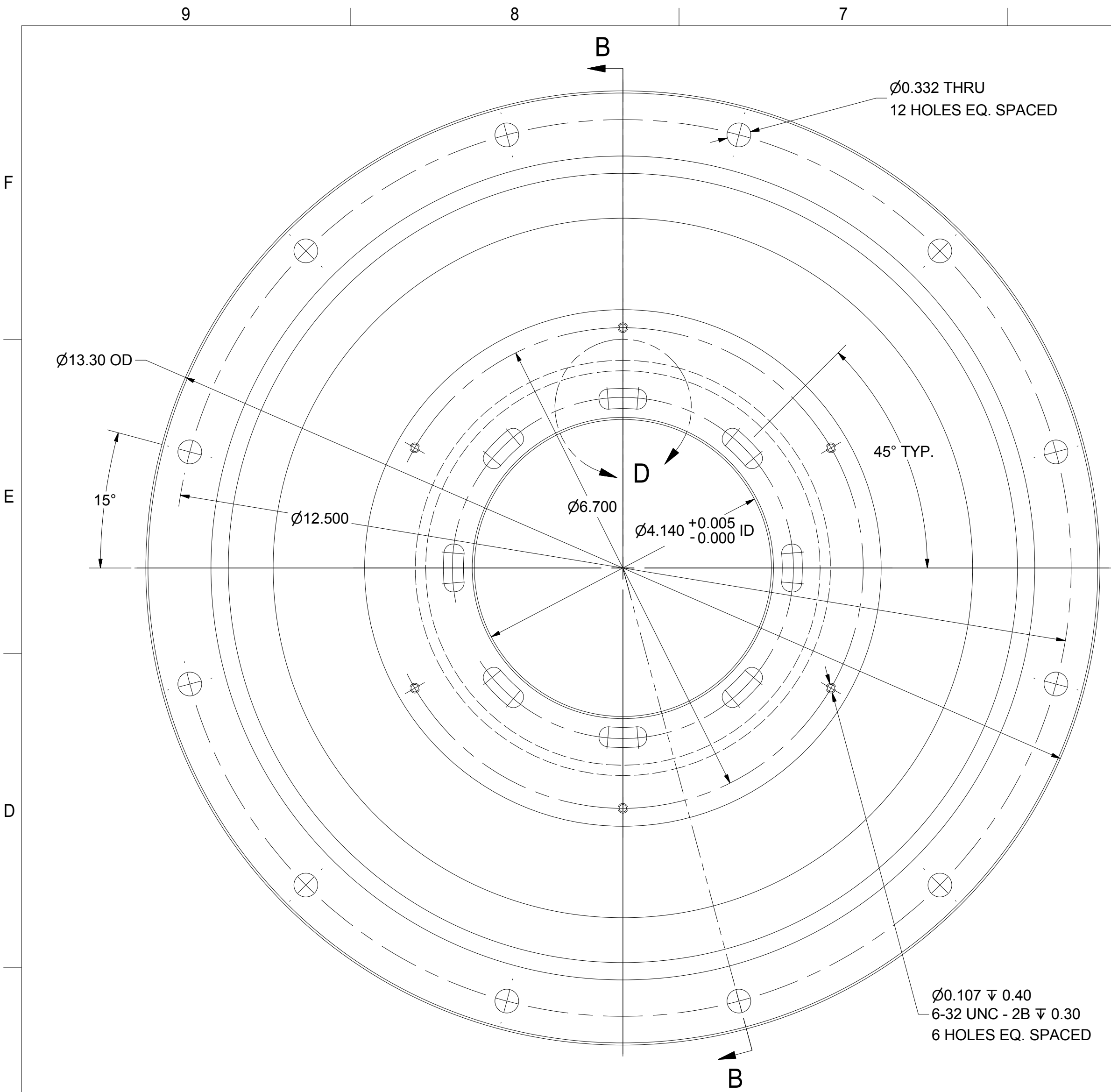
COUPLER PORT FLANGE, ASSEMBLY

FILE NAME: 7103-083
SHEET NO.: 1
DFT. SCALE: 1:1.25
MATERIAL: AS NOTED
QTY: 6 PER ERL LINAC CRYOMODULE
NOTES:

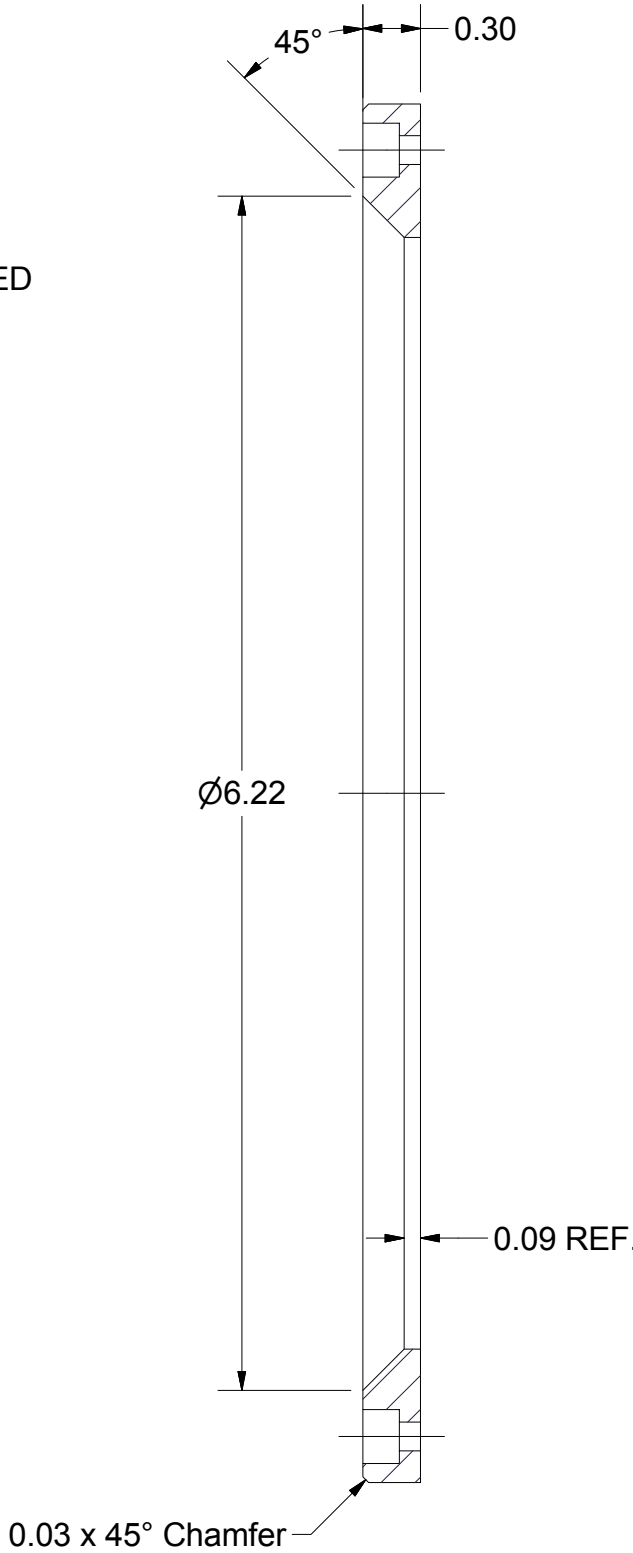
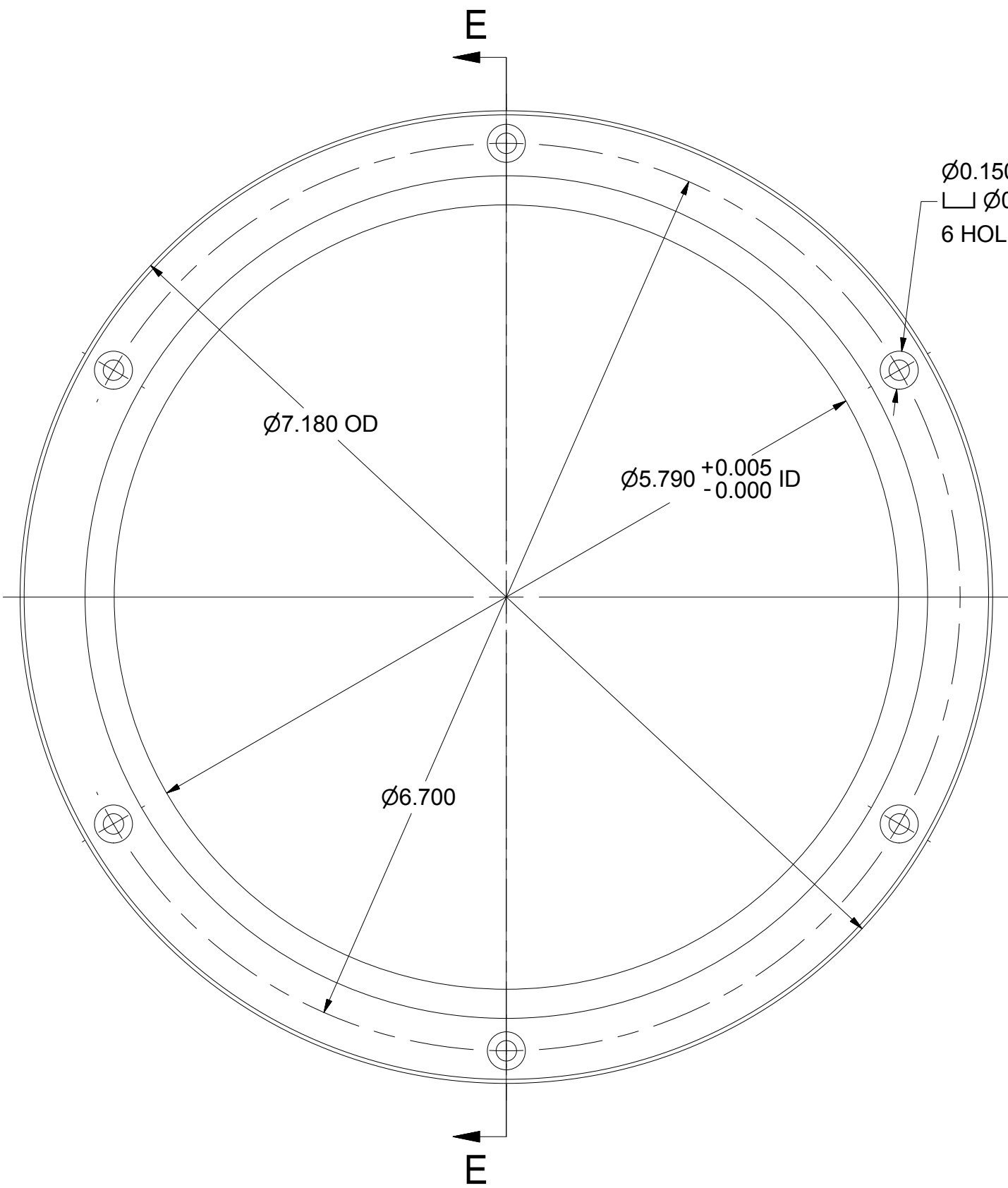
7	PURCHASE	No. 6 Helical Spring Lock Washer	6		Stn. Stl.	
6	PURCHASE	No. 6-32x0.375 Hexagon Socket Head Cap Screw	6		Stn. Stl.	
5	PURCHASE	VITON O-RING, SIZE #355	1			
4	PURCHASE	VITON O-RING, SIZE #379	1			
3	SHEET 2	GUIDE RING	1			
2	SHEET 2	COUPLER PORT FLANGE	1			
1	SHEET 1	COUPLER PORT FLANGE, ASSEMBLY	X			

		ITEM	DWG. NO.	DESCRIPTION	G1	G2	G3	REMARKS	REV.
					QUANTITY				
<div>D</div>	PRINT DISTR.	PLOT DATE: 9/30/2014 CAD FILE NAME: 7103-083.idw							
	<div>SH. NO. 1</div> <div>7103-083</div> <div>OF 4</div>	CR-1 UNLESS OTHERWISE SPECIFIED: DIMENSIONS ARE IN INCHES: TOLERANCES ON: .0 ± .02 .00 ± .010 .000 ± .005 FRACTIONS 1/32 ANGLES ± 0.5° ALL SURFACES $\sqrt{32}$	<div> Cornell University Laboratory for Elementary-Particle Physics</div> <div>Floyd R. Newman Laboratory Robert R. Wilson Laboratory Ithaca, NY 14853</div>						
REV.			COUPLER PORT FLANGE ASSEMBLY					<div>D</div>	7103-083 SH. NO. 1 OF 4
	CHECKED BY: TIO APPROVED BY: VGV	DRAWN BY VGV	DRAWN FOR MUL	DATE 2/24/2012	SCALE 1:1.25				

REVISIONS				
SYM.	ZONE	DESCRIPTION	DATE	APP.
A		Added sheets 3 & 4	2/18/14	TIO

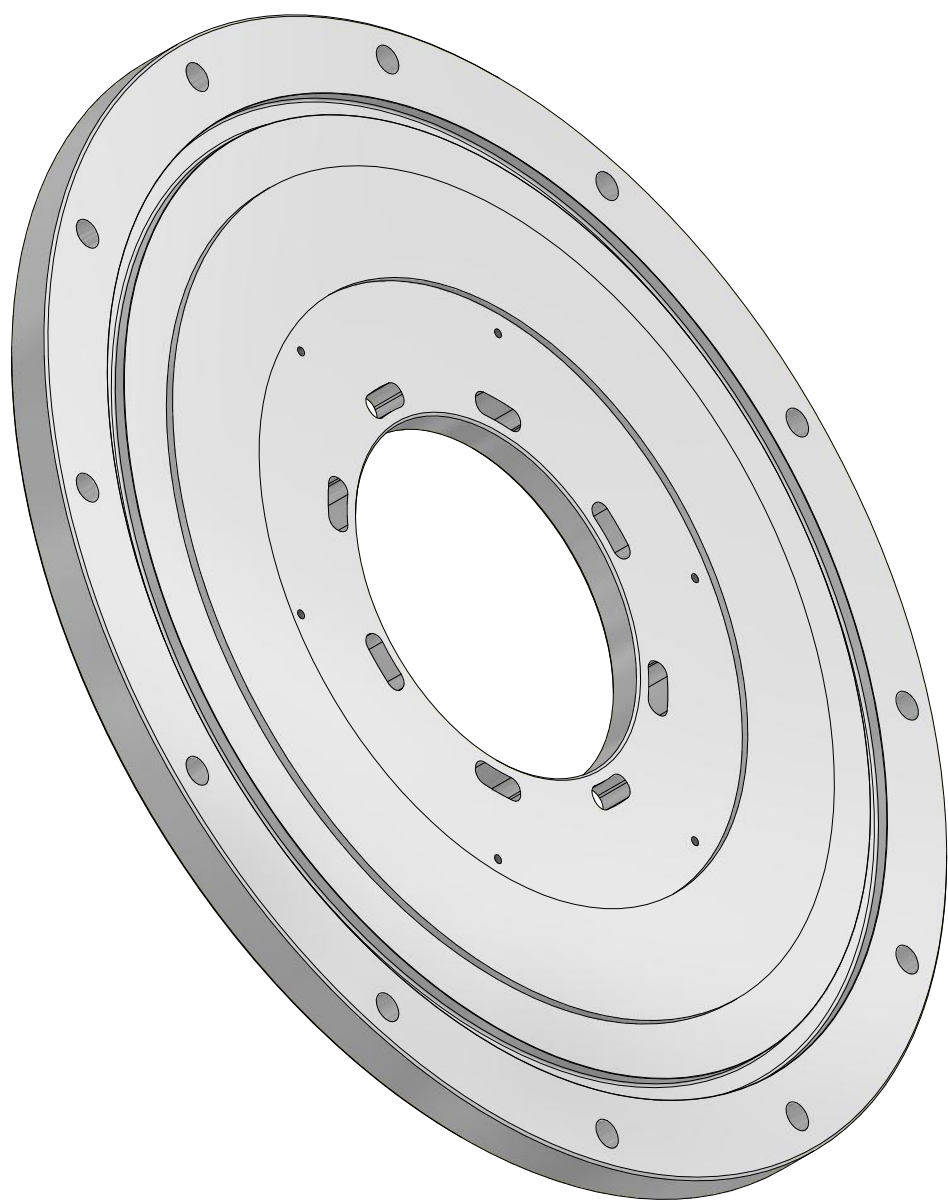


SECTION B-B

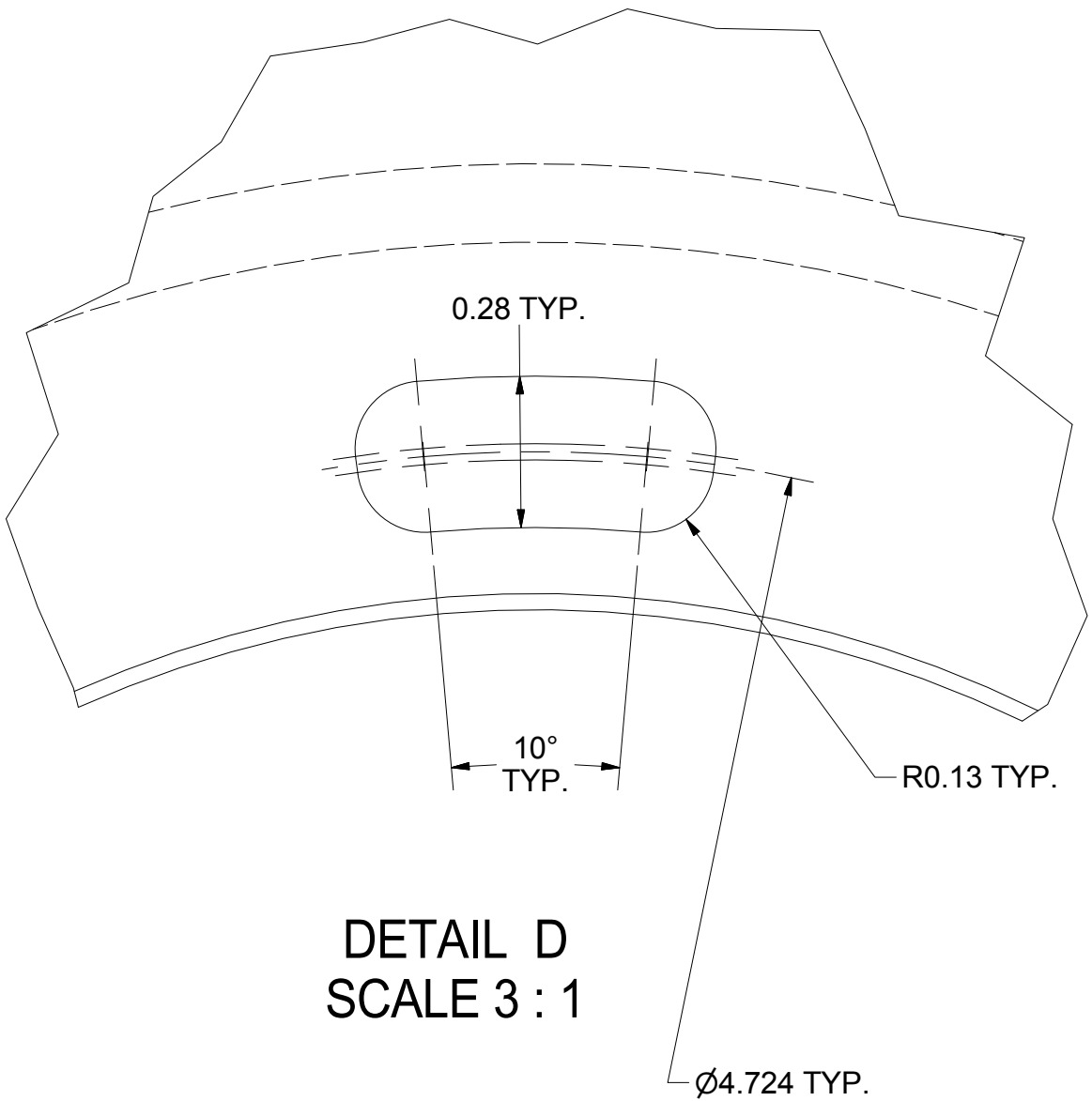


3 GUIDE RING

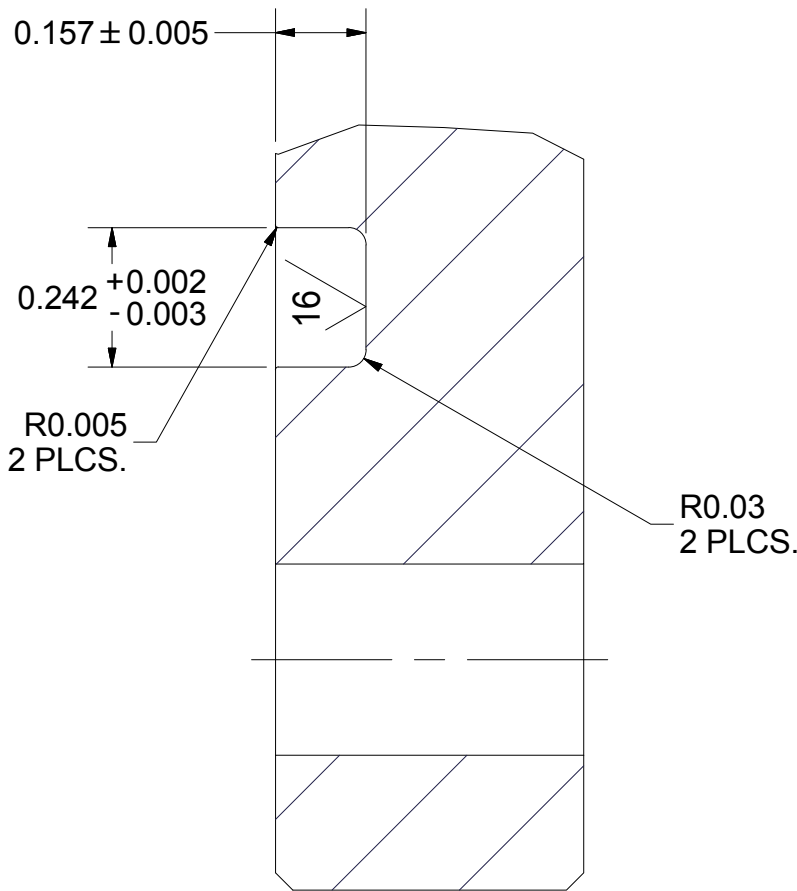
FILE NAME: 7103-083
SHEET NO.: 2
DFT. SCALE: 1:1
MATERIAL: 304L STN. STL.
QTY: 1 FOR ASSEMBLY
NOTES:



SCALE 1 : 2




DETAIL D
SCALE 3 : 1



DETAIL C
SCALE 3 : 1

2 COUPLER PORT FLANGE

FILE NAME: 7103-083
SHEET NO.: 2
DFT. SCALE: 1:1.25
MATERIAL: 304L STN. STL.
QTY: 1 FOR ASSEMBLY
NOTES:

		ITEM	DWG. NO.	DESCRIPTION			G1	G2	G3	REMARKS		REV.		
		QUANTITY												
D	PRINT DISTR.	PLOT DATE: 9/30/2014 CAD FILE NAME: 7103-083.idw												
	CR-1	UNLESS OTHERWISE SPECIFIED: DIMENSIONS ARE IN INCHES: TOLERANCES ON: .0 ± .02 .00 ± .010 .000 ± .005 FRACTIONS ± 1/32 ANGLES ± 0.5° ALL SURFACES			 Cornell University Laboratory for Elementary-Particle Physics					Floyd R. Newman Laboratory Robert R. Wilson Laboratory Ithaca, NY 14853				
7103-083 SH. NO. 2 OF 4		COUPLER PORT FLANGE												
		DETAILS												
A	REV.	CHECKED BY: TIO			DRAWN BY: VGV		DRAWN FOR: MUL		DATE: 2/24/2012		SCALE: D		7103-083 SH. NO. 2 OF 4	REV. A
		APPROVED BY: VGV												

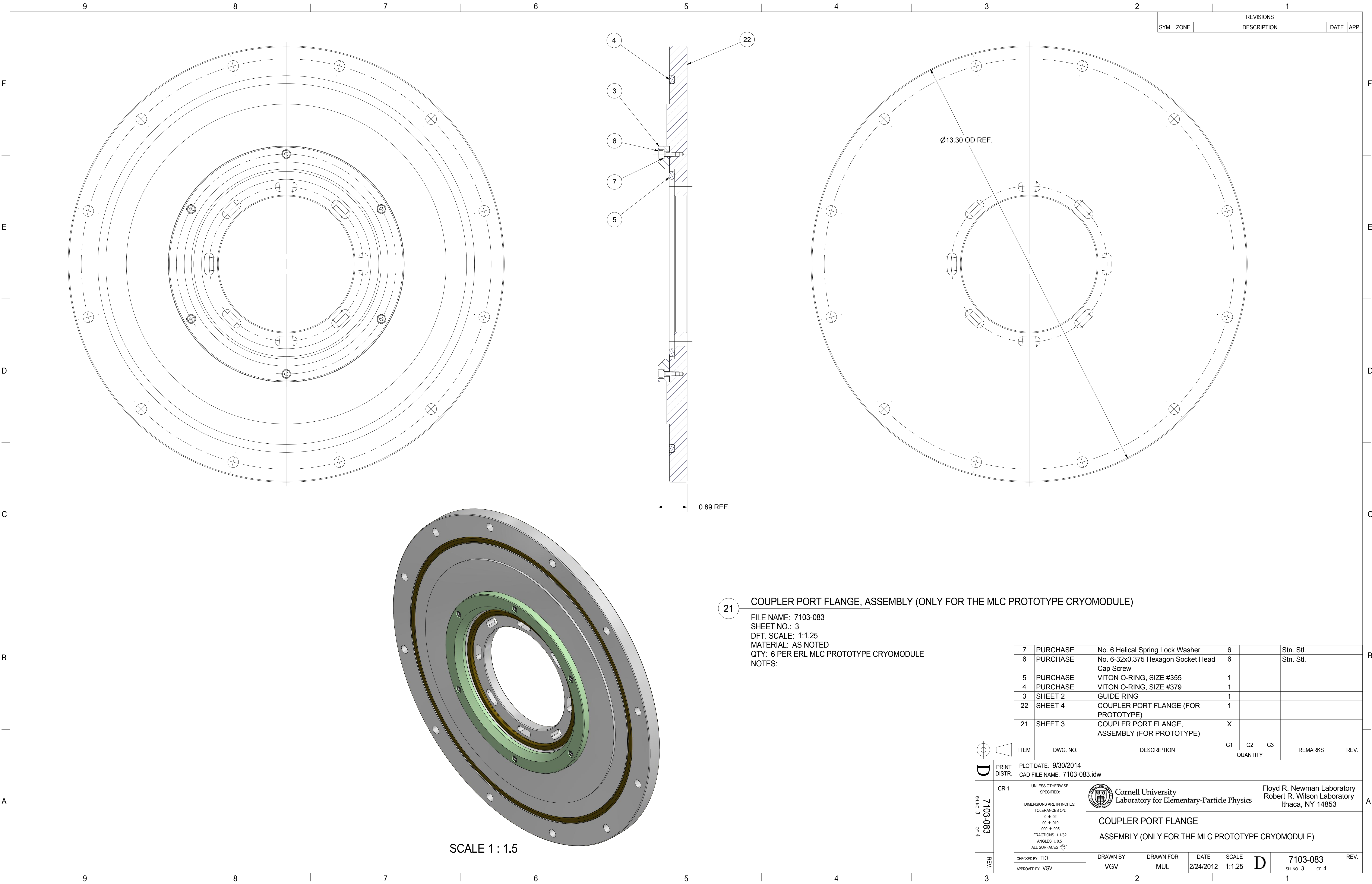


Cornell University
Laboratory for Elementary-Particle Physics

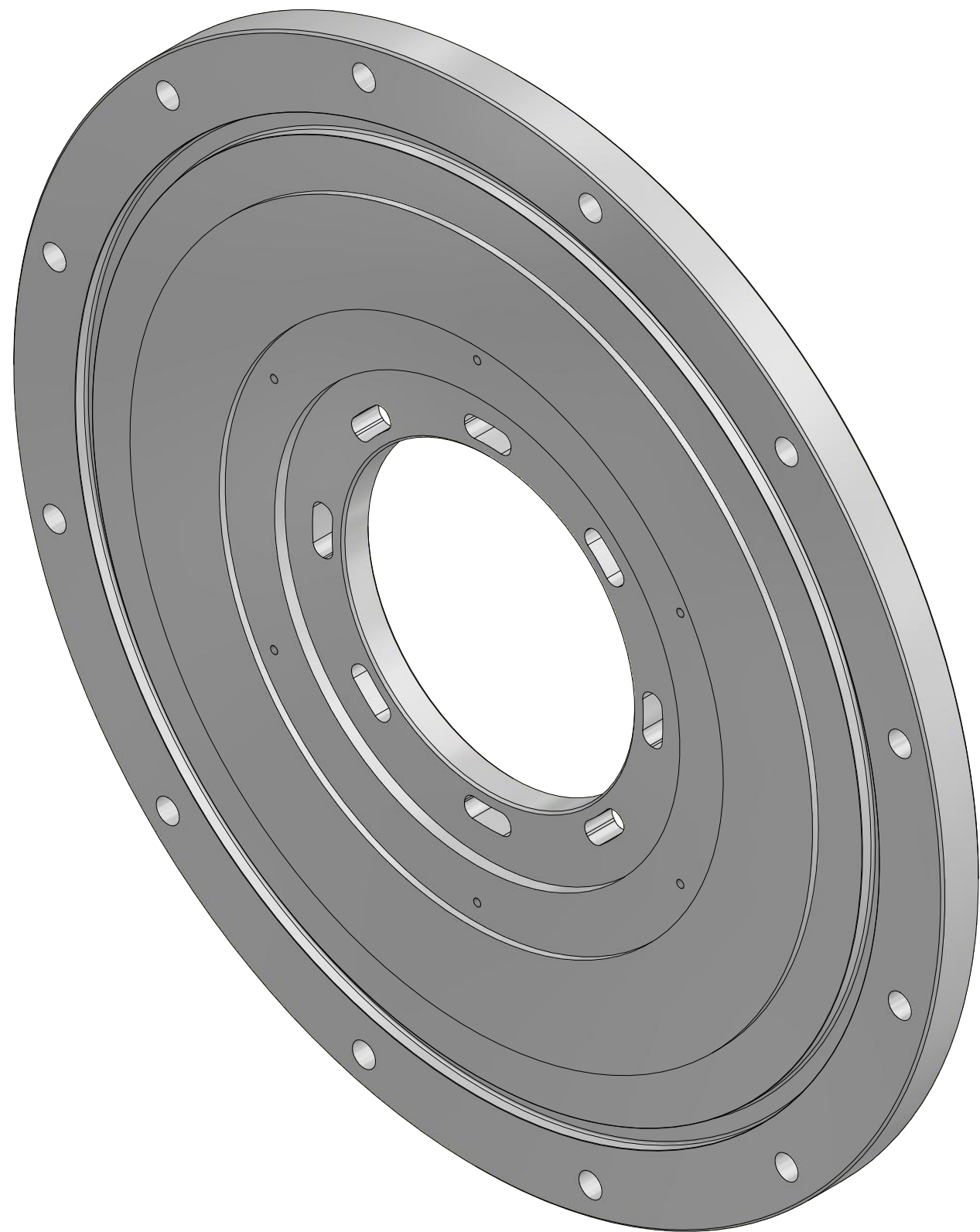
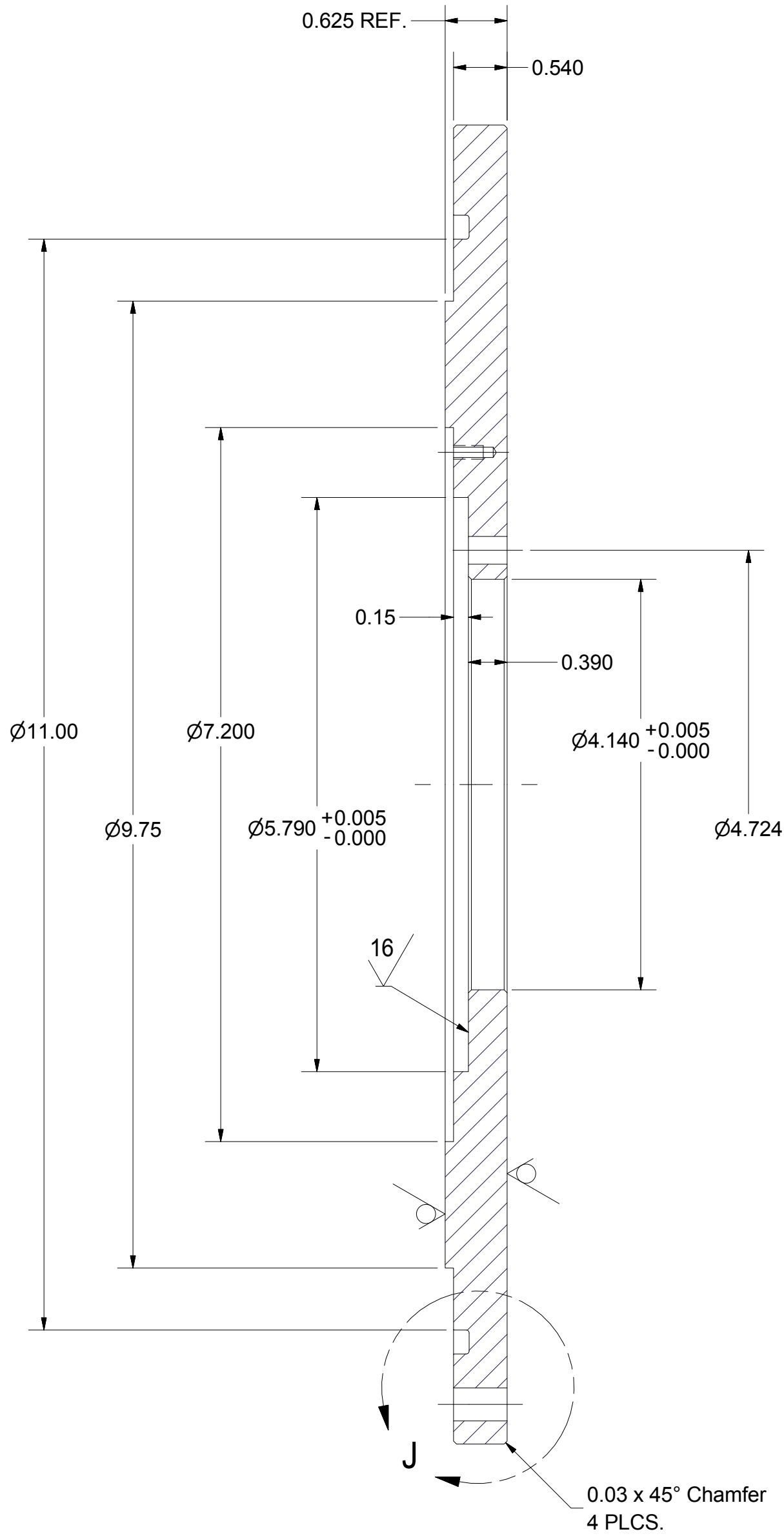
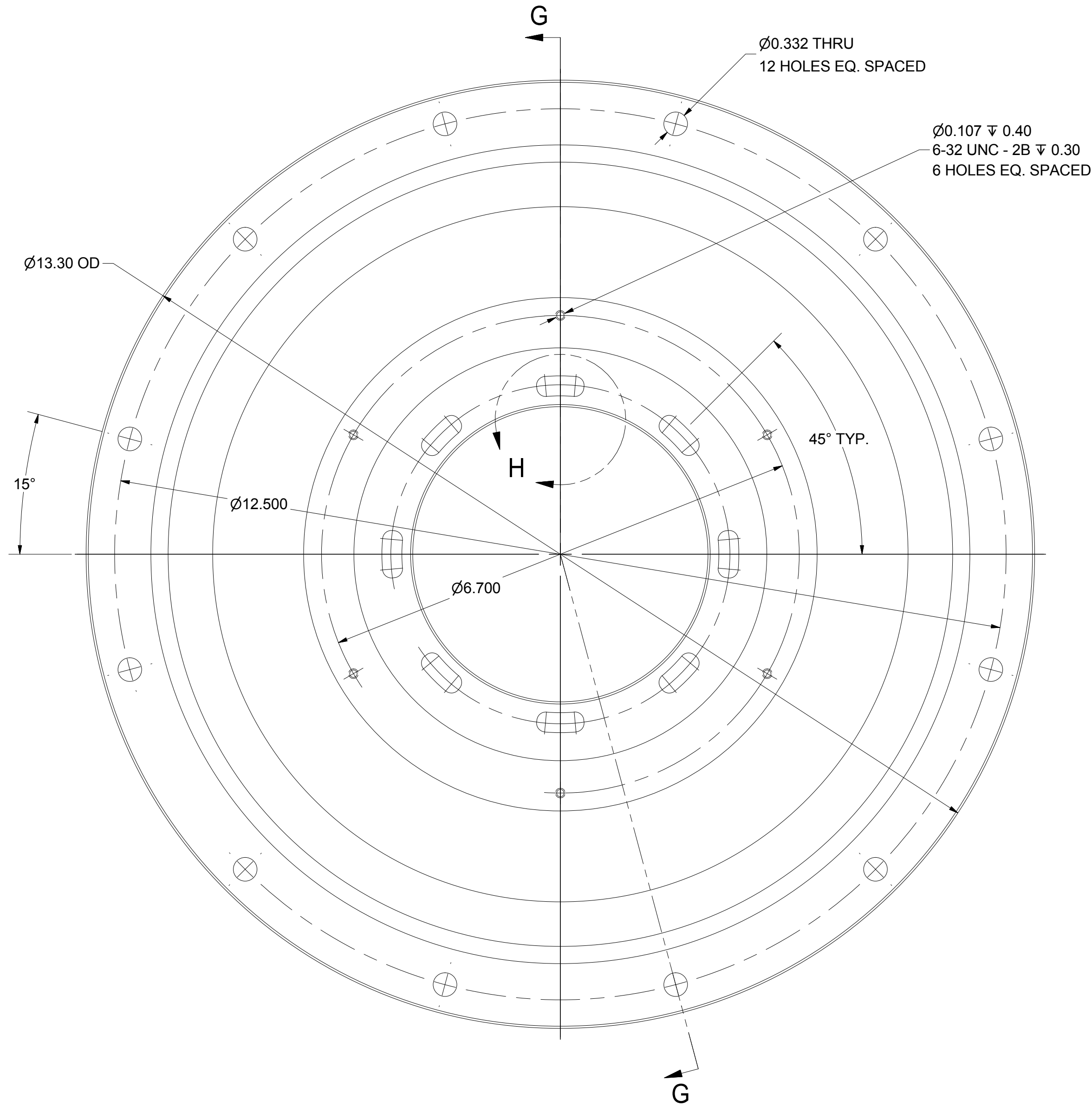
Floyd R. Newman Laboratory
Robert R. Wilson Laboratory
Ithaca, NY 14853

COUPLER PORT FLANGE

DETAILS

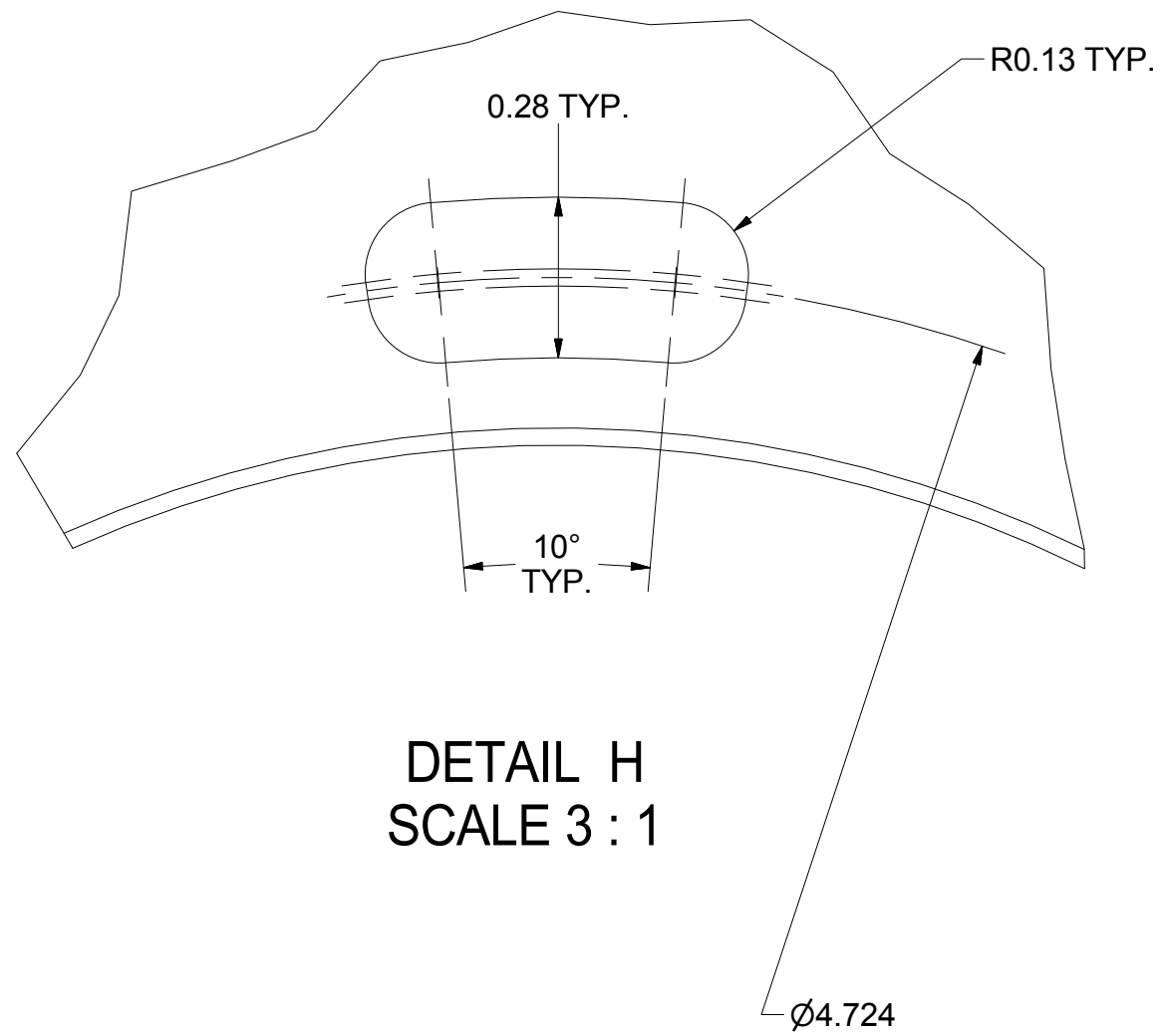


REVISIONS				
SYM.	ZONE	DESCRIPTION	DATE	APP.
A	F7	Revised hole note (12 holes was 16 as noted, model was correct)	9/30/14	TIO

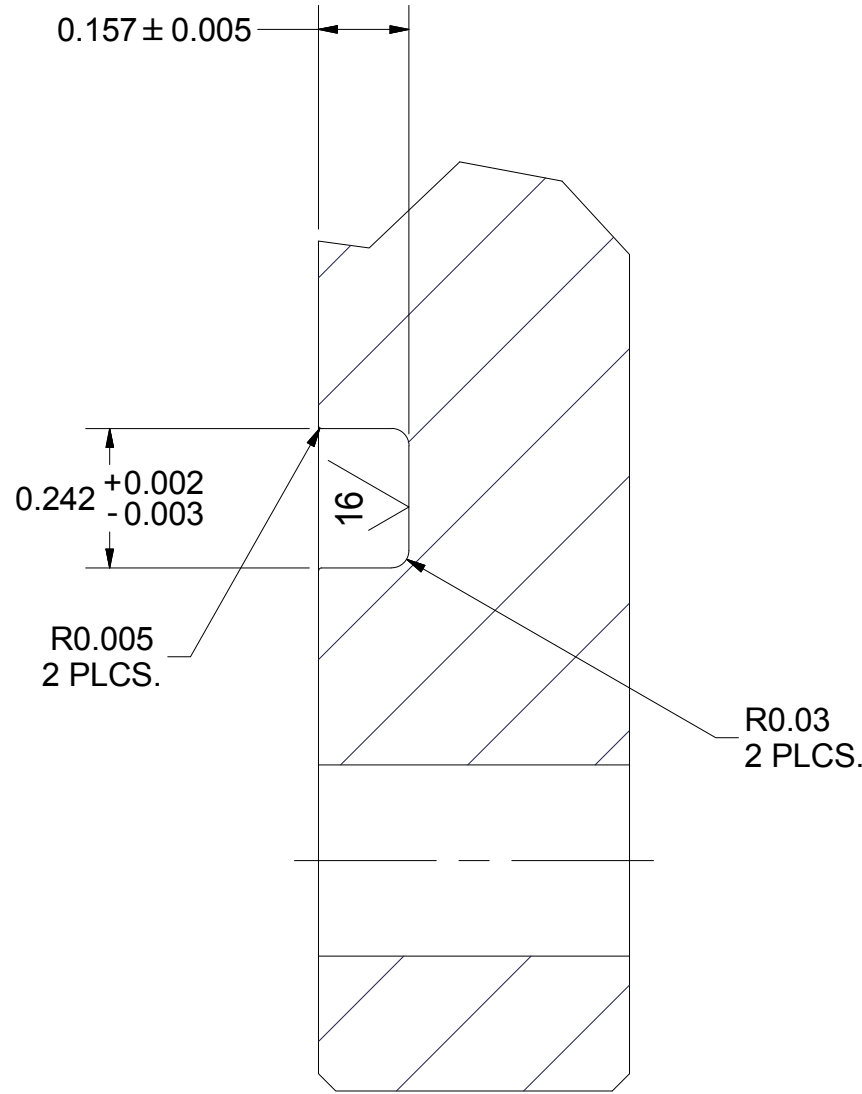


SCALE 1 : 1.5

SECTION G-G

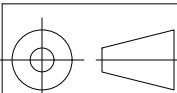

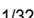
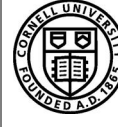


DETAIL H
SCALE 3 : 1



DETAIL J
SCALE 3 : 1

22 COUPLER PORT FLANGE (ONLY FOR THE MLC PROTOTYPE CRYOMODULE)
FILE NAME: 7103-083
SHEET NO.: 4
DFT. SCALE: 1:1.25
MATERIAL: 304L STN. STL.
QTY: 1 PER ASM.
NOTES:

		ITEM		DWG. NO.		DESCRIPTION		G1		G2		G3		REMARKS		REV.									
								QUANTITY																	
		PRINT DISTR.		PLOT DATE: 9/30/2014 CAD FILE NAME: 7103-083.idw																					
D 7103-083 SH. NO. 4 OF 4		CR-1		UNLESS OTHERWISE SPECIFIED: DIMENSIONS ARE IN INCHES: TOLERANCES ON: .0 ± .02 .00 ± .010 .000 ± .005 FRACTIONS ± 1/32 ANGLES ± 0.5° ALL SURFACES 		 Cornell University Laboratory for Elementary-Particle Physics Floyd R. Newman Laboratory Robert R. Wilson Laboratory Ithaca, NY 14853																			
						COUPLER PORT FLANGE DETAILS (ONLY FOR THE MLC PROTOTYPE CRYOMODULE)																			
REV. A				CHECKED BY: TIO		DRAWN BY: VGV		DRAWN FOR: MUL		DATE: 2/24/2012		SCALE: D		7103-083		REV. A									
				APPROVED BY: VGV								SH. NO. 4 OF 4													